

All Saints Bedworth CofE Academy SEND Information Report



This is All Saints Bedworth CofE Academy's SEND information report. This report has all the information that you will need to participate fully in the education of your child and should be read together with our SEND policy.

[Special Education Needs and Disabilities \(SEND\) | All Saints Church of England Academy \(covmat.org\)](https://www.covmat.org)



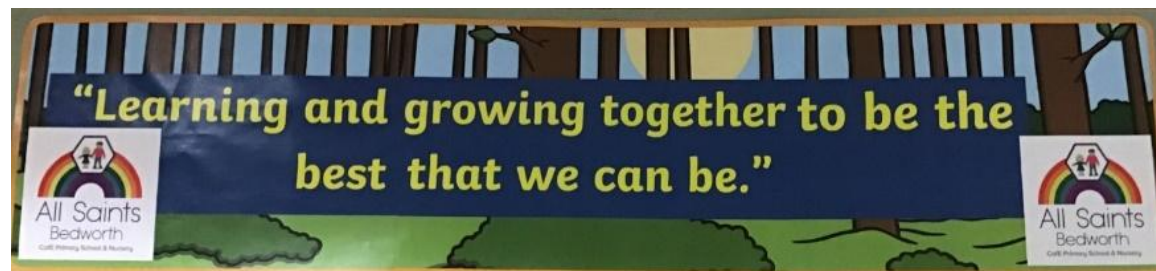
Our Vision



We are an inclusive, mainstream academy, that belongs to the Diocese of Coventry Multi Academy Trust. The Core Mission of the Diocese of Coventry Multi Academy Trust is to build a better future for all within our Academies who in turn will positively impact their communities. The vision of the MAT centres on the statement **‘Together, pursuing ‘life in all its fullness’ (based on John 10, 10)**

Our Academy vision is built around the Parable of the Sower (Luke 8:15).

We are committed to ensuring that we provide the fertile soil in which everyone can grow to be the best that they can be. We use the statement **‘Learning and Growing together to be the best that we can be’** to summarise our Academy vision.



What are the different kinds of SEND the academy caters for ?



The needs of a child with SEND will fall under one or more of these four broad areas, as outlined in the SEND Code of Practice:

1. Communication and interaction



2. Cognition and learning



3. Social, emotional and mental health difficulties



4. Sensory and/or physical needs



Who are the SEND staff at our academy ?



<p>Mrs K. O'Grady Headteacher</p>	<p>Miss M. Carbonell SENDCo and Inclusion Leader</p>	<p>Mrs A. Greenway Inclusion Coordinator</p>	<p>Mrs D. Henton Inclusion HLTA</p>
			
<p>Miss A. Woodhouse Inclusion TA</p>	<p>Mrs A. Coleman Inclusion TA</p>	<p>Miss I. Aucott Inclusion Apprentice</p>	
			

Our SEND Governor is Mrs K. Billingsley. At All Saints Bedworth CofE Academy, all of our staff are teachers of SEND and as a result all receive training on supporting pupils with SEND .

What is the Local Offer ?



Local Authorities and schools are required to publish and keep under review information about services they expect to be available for the children and young people with special educational needs and disabilities (SEND). This is the 'Local Offer' and is available through:

<https://www.warwickshire.gov.uk/sendlocaloffer>



[Barnardo's Warwickshire
\(warwickshiresendiass.co.uk\)](https://www.warwickshiresendiass.co.uk)



<https://youtu.be/QXtnb3wuBwI>



If I am concerned about my child, what should I do?



- **Always speak to your child's class teacher first.** They know your child best and are usually able to resolve most concerns quickly and effectively.
- If you still need support after talking to the class teacher, please contact the school office to arrange an appointment with Mrs Greenway or Miss Carbonell (SENDCo).
- For more complex needs, a meeting with the SENDCo or a multi-agency team may be arranged to ensure the right support is in place.
- Sharing your concerns early—especially at transition points—helps us provide the best possible support for your child from the start.



Who should I talk to if I need to know anything about my child's SEND?



- Please refer to the class teacher in the first instance – they often know your child best.
- If you need further support having spoken with the class teacher, please then contact the office to arrange an appointment with either Mrs Greenway or Miss Carbonell.

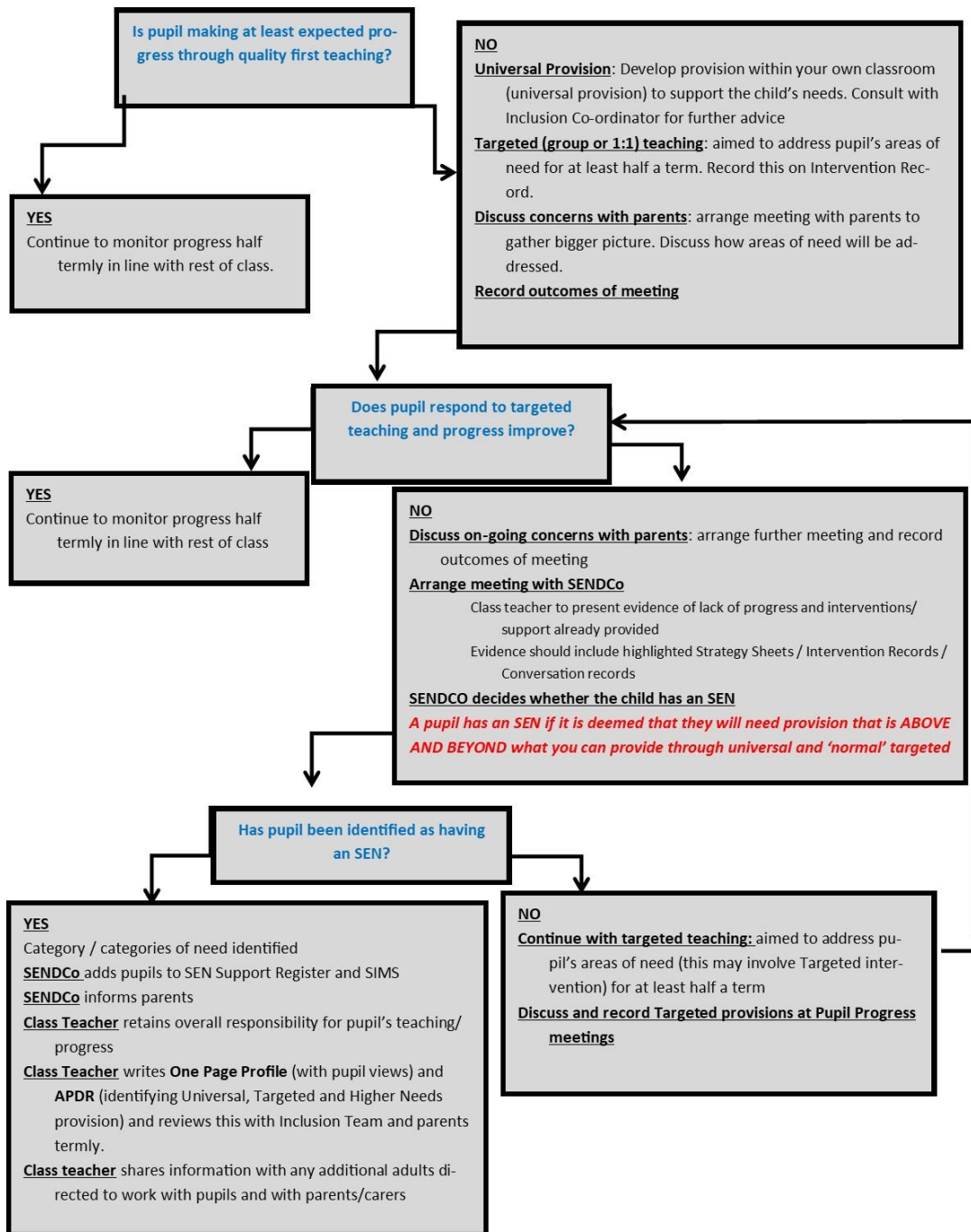


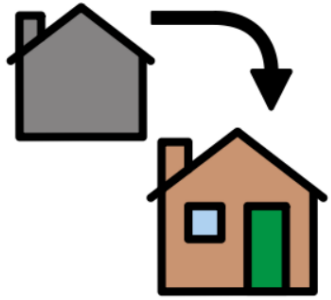
If the academy are concerned about my child, what will they do?



- Staff use information from previous settings and regular assessments to understand each child's needs and progress.
- Teachers check how all children are doing every day and through termly assessments.
- If a child isn't making expected progress, staff will adapt lessons and provide extra support in class.
- Children who need more help are discussed at termly pupil progress meetings with the Head Teacher and SENDCo.
- Staff keep a record of the support given and its impact, to help decide if further help is needed.
- If concerns continue, the SENDCo will observe the child and suggest further strategies or interventions.
- This process is part of our **Graduated Response**—we review and adapt support as your child moves through the school.

Process for Identifying pupils with Special Educational Needs





What if my child with SEND is moving from another school or setting?



- Sometimes, children are identified as having SEND before they start at All Saints Bedworth CofE Academy.
- If this is the case, we talk to previous settings and parents to understand any difficulties, what support has worked, and if any outside agencies are involved.
- When children join us from another school, the SENDCo will also contact their previous school to gather information about any additional needs.
- If extra support in school isn't helping your child make progress, we may seek advice from external specialists.
- Further assessments by outside agencies will only be recommended if school-based interventions haven't closed the gaps in learning.

How do you know if my child is making progress?



- We review every child's progress each term, and this is discussed with the Head Teacher and SENDCo.
- The SENDCo checks how well extra support (interventions) is working by assessing progress before and after each intervention
- Progress of children with SEND is tracked closely, and this information helps us plan support across the school.
- Parents are updated on their child's progress every term at parent evenings and additional SEND meetings are offered 3 x per year after APDR reviews.

How will my child's voice be heard ?



- We listen to your child to help them grow and to understand how best to support them.
- Your child helps create a **One Page Pupil Profile** to share what helps them succeed and what support they need in school.
- We regularly gather pupil feedback in different ways to plan next steps.
- Children can also share their views during Annual Reviews if they have an EHCP.

Which services does the academy use to support children with SEND ?



School arranges access to a range of services on a contractual/referral basis.

These include

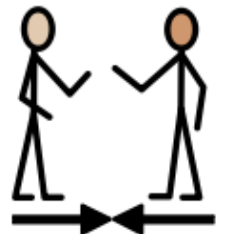
- Educational Psychologist
- Mental Health School's Team
- Integrated Disability Service
- Specialist Teaching Services
- Speech and Language Therapy
- Occupational therapy
- Visual Impairment team
- CADMUS
- Connect4 Health
- Rise, CASS



How will you support my child when they move to another year group ?



- Pupils visit their new teacher during transition day, which is a whole school event.
- For those pupils who need it, an enhanced transition program is offered. This may involve the child visiting their new classroom and teacher more regularly in the second part of the summer term.
- Transition booklets are produced for identified children to have over the summer holiday for use at home.
- Staff meet to share what works with your child and to support class handover.



How will teaching be adapted for my child?



- Through Quality First Teaching, we ensure that the needs of children with SEND are met.
- We implement a range of 'universal provision' strategies that support children to access the curriculum – these are adapted based on the needs of groups and individuals as needed
- We provide a graduated response to meeting children's needs
- Any interventions your child receives will be evaluated for impact.
- A whole-school provision map ensures that resources and strategies are targeted well to meet pupils' needs to maximise progress.
- As part of children's Assess Plan Do Review children are set learning targets and these are reviewed. These targets are shared with parents at termly reviews.

All staff make sure that all children, with identified SEN or not, can access the curriculum with reasonable adaptations.

- Scaffolding/breaking tasks into smaller chunks.
- Using visual resources / prompts / word banks etc
- Planning additional support from TA
- Increased use of praise / rewards
- Peer-to-peer support
- Adapting language used.
- Using concrete / practical resources
- Alternative ways of recording (ICT / voice recording / scribing)
- Pre-teach



1. UNIVERSAL PROVISION



- Additional support to keep-up or catch-up (Intervention groups).
- Delivered in small groups or 1:1, usually away from the classroom.
- Focused on Key Skills within reading, writing or maths.
- Children with identified SEN might need this to help meet their needs in one or more areas.
- Also used as a way to gather evidence to support identifying SEN as part of our APDR cycle.

2. TARGETED PROVISION



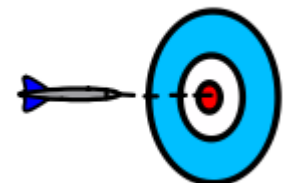
Pupils have a higher level of need. Usually children have an EHCP or are waiting for an EHCP. External agencies involved (STS), EP, CAMHS.

- Accessing the DEN
- Regular 1:1 or small group teaching
- Highly structured routines
- Pupil-centered, following advice from specialists

3. HIGHER NEEDS PROVISION

What resources are available to support pupils with SEND?

- The class teacher plans work and resources to match each child's needs.
- Most support happens in the classroom, using a range of strategies and interventions.
- If your child is supported by an outside agency, we follow their advice to provide the right resources.
- Sometimes, children may have extra help outside the classroom if they need something more specific.
- We may also ask for advice from specialists if further support or resources are needed.



What is the pastoral, medical and social support available in the school to ensure my child's well-being?



- Our school is values driven and underpinned by our Christian faith.
- Personal, Social and Health Education (PSHE) is integral to our curriculum and is also taught discretely using the My Happy Mind, No Outsiders and Protective Behaviours scheme of learning.



- The class teacher has overall responsibility for the pastoral, medical and social care of every child in their class and so they should be your first port of call. If further support is required, the class teacher liaises with the SENDCo for further advice and support. This may involve working alongside outside agencies.

What is the pastoral, medical and social support available in the school to ensure my child's well-being?



- Mrs Greenway can signpost parents/carer to family support services and offer Early Help to support.



- We have close links with St Michael's Childrens and Families center.



[Children and Family Centre | St Michael's Church of England Academy \(covmat.org\)](http://covmat.org)



What support is there for me as a parent / carer?

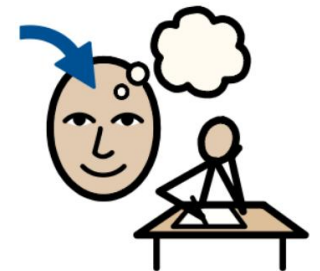


- We value feedback from parents and carers.
- Class teachers are available for informal chats at the end of each school day.
- You can discuss your child's progress with teachers at least twice a year during parent consultations and termly SEND meetings.
- At the end of the year, you'll receive a written report about your child's progress.
- If you need extra support, Mrs Greenway or Miss Carbonell can help you find the right services.

What training is available to staff supporting SEND?



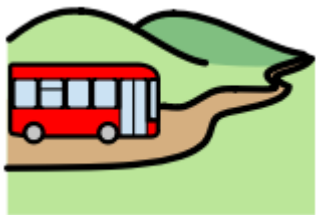
- All staff have safeguarding training.
- Our school SENDCo is qualified and is experienced in this field.
- All our teachers hold Qualified Teacher status, and they receive training across each academic year. We keep a record of ongoing training.
- Some of our staff are trained in specific interventions.
- Most of our staff are Team Teach trained.
- All staff receive training on how best to support children with SEND.



What extra curricular activities will be available for my child?



Our Equal Opportunities policy promotes involvement of all our learners in all aspects of the curriculum including activities outside the classroom. Where there are concerns for safety and access, a personalised risk assessment is carried out to consider if reasonable adjustments can be met to meet any additional needs. If appropriate, parents/carers will be consulted and involved in planning.





How does the academy support children who have SEND and are Looked after?

At All Saints Bedworth, we would support Looked After Children that also have SEND by following our SEND policy.

In addition to this, Looked after children will have termly PEP reviews to check their progress and decide if other provision needs to be bought in on their behalf.



How are complaints dealt with?



Complaints are dealt with in line with the school Complaints Policy which is available on the school website or from the School Office.

[Trust Wide Policies | All Saints Church of England Academy \(covmat.org\)](https://www.covmat.org)